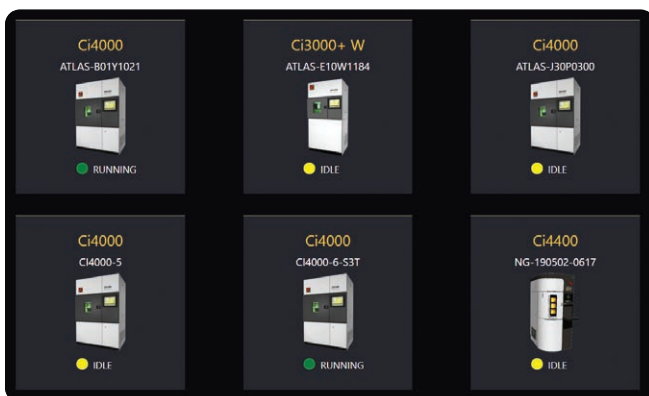
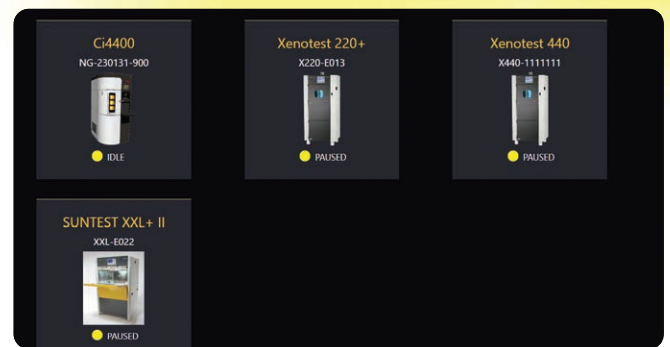
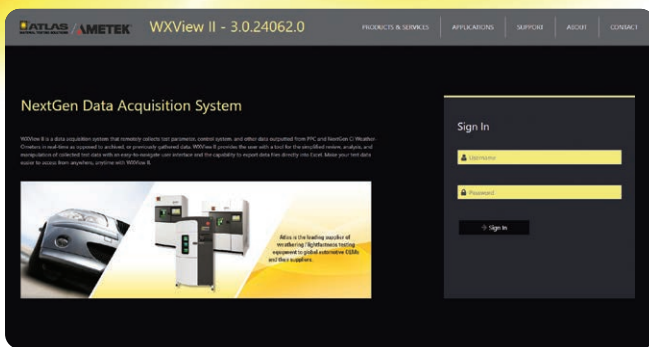


WXView II™

Data Acquisition System



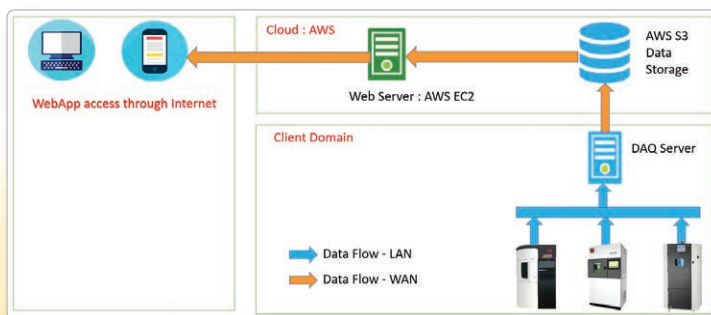
In today's fast-paced business environment, you need constant access to your accelerated weathering test data. Whether working from home or office, you can now monitor operating parameters of the Ci Series Weather-Ometer®, Xenotest®, 220+/440, and SUNTEST®, XLS+ and XXL+ with our next generation data acquisition system, WXView II (pronounced "Weather View Two") anywhere, anytime.



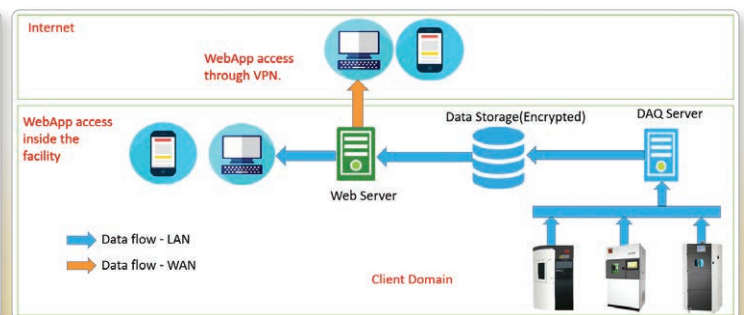
System Features

- Web-based application
- Multi-site monitoring
- Data collection and storage on Local Area Network or Cloud
- Safe and secure with built-in encryption
- View of current operating parameters
- Monitoring test progress and instrument status
- Zoom in/out to assess phase transitions or complete test cycles
- Access to alarms and maintenance tables
- Downloading of archived test data
- Unlimited connectivity to PCs and Ci Weather-Ometer, Xenotest, and SUNTEST on network

Cloud Data Flow



On-premises Data Flow



WXView II™

Data Acquisition System



DAQ Server/Data Server/WXView II Server Requirements

- Operating System: Windows Server 2012/2016/2019/2022
- Standard 64 bit (6.2) (Windows Server 2016)
- Minimum Processor: 3.0GHz quad core, Intel Core i5
- Minimum RAM: 8GB
- Minimum 500 GB Hard Drive
- Minimum number of Network Interface Cards (NICs): 2
- Install on a physical server, virtual machine, or cloud

2

Unit Information		Unit Status	
Instrument Name	NG-190502-0617	Instrument Operating Time	13,927 hrs
Model	C1400	Instrument Dosage	2,017,530.85 kJ/m²
Serial #	30137	Instrument Light Time	12,367.77 hrs
Software Version	3.1.230412.1015	Working Lamp Hours	2,711.27 hrs

Figure 1: Archived test data can also be downloaded and analyzed within the WXView II application. Critical control system information can be reviewed and shown or hidden with the click of a button.

Figure 2: Shows general instrument information, including User Interface software version, operating time, and current working xenon-arc lamp hours.

3

Parts	Interval (hrs)	Due In (hrs)
Calibrate Irradiance	500	220
Check Damper System	2000	1930
Check Spray Nozzles	2000	1930
Check/Clean/Replace Air Filter	2000	1930
Clean Humidifier	2000	1930
Clean Lamp Water Filter	2000	1930
Inspect Thermostats	4000	3930
Replace DI Water Filter	2000	1930
Replace Inner Filter	400	357

Figure 3: Shows current status of all maintenance scheduled and lifetime of consumable items. This information is critical to plan for service and ordering lamps, filters, and other consumables.