

TECHNICAL PARAMETERS Vibration exciter S 55240/LSS-250

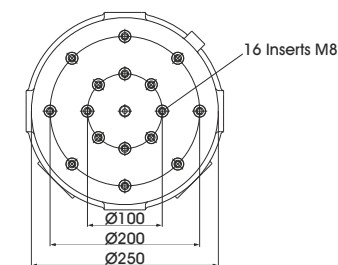
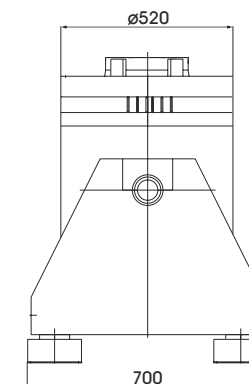
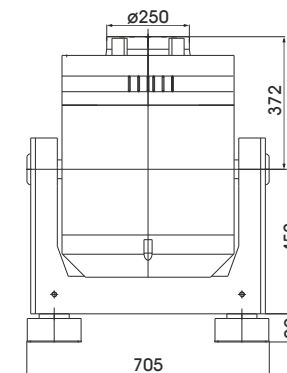
Rated peak force Sine _{pk} /Random _{RMS} ¹ /Shock _{pk} ²	4000/3400/10000 N
Frequency range	1 - 2000 Hz
Main resonance frequency	>2000 Hz
Max. displacement Peak-Peak ³	100 mm
Max. velocity Sine/Random/Shock	2.0/2.0/4.5 m/s
Max. acceleration Sine/Random/Shock	37/30/74 g
Suspension stiffness	electronically adjustable
Effective moving mass (±5%)	12.0 kg
Max. payload	50 kg
Total mass	800 kg
Armature diameter	250 mm
Interlocks	Field coil temperature, displacement, cooling air, overcurrent

1) Random force according to ISO 5344:2004

2) Theoretical maximum shock value. Depends on payload, amplifier, shock and shock width

3) only with foundation mounting

For long-term tests, the load must be reduced to 80 %. Continuous operation at maximum load can cause damage.



Armature 250 (Standard)

SCOPE OF DELIVERY, OPTIONS AND FEATURES OF THE SYSTEM

<p>Scope of delivery: Vibration exciter 4 kN Trunnion mount Power amplifier 15 kVA Cooling blower Connection cables (each 5 m) Power cables (5 m) for amplifier (CEE 32 connector) Blower hose ø60 mm (5 m)</p>	<p>Options: Different thread inserts in the armature at customer request Wheels&Rails (incl. 3m rails) Squeak&Rattle (Silent operation without blower) Thermobarrier Chamber leadthrough Climatic chamber support kit Remote control (Software) Silencer for cooling blower (Noise reduction up to 6 dB(A)) Acoustic enclosure for cooling blower (Noise reduction 15 - 23 dB(A)) Cable extension Factory acceptance test</p>	<p>Options: TIRA EMS Energy Management System Operation with temperature-controlled cooling blower (and optional with variable field strength) ASM-Mode (Auto Shutdown Manager)</p> <p>Features: Vibration isolation < 6 Hz Coarse filter unit Fully automatic pneumatic load compensation Electronic zero point regulation with adjustable stiffness Automatic centering of the armature Made in Germany Servicehotline</p>
--	---	--

TECHNICAL PARAMETERS Amplifier A 1 02 11 021 T SV

Max. output power _{RMS} (factory-set)	15000 VA
Frequency range	DC - 5 kHz
Voltage _{RMS} , max.	212 V
Current _{RMS} , max. (factory-set)	40-100 A
Signal input voltage _{PK}	±10 V
Total Harmonic Distortion (at 70A _{RMS} , 200 Hz)	< 0.2 %
Signal to noise ratio	> 80 dB
Field voltage (factory-set)	140-280 V
Field current (factory-set)	6-8 A
Total mass	330 kg
Dimensions (WxHxD)	600 x 1740 x 800 mm
Power supply (Standard)	3~ / N / PE 400 V±5% 50 Hz, CEE 32
Recommended fuse protection	32 A slow
Max. power consumption at 400 V (incl. blower)	17 kVA
Interlocks:	Overload, Temperature, Displacement, Cooling air, Phase monitoring, Emergency stop

Features:

- Field supply integrated
- Field voltage/Field current variable according to customer spec.
- 4 Sigma peak current
- Electronic zero-point-regulation (TMC)
- Mains switch and integrated line filter
- Color Touch Screen



TECHNICAL PARAMETERS Cooling blower TB 0310

Volume flow rate	max. 315 m³/h
Total pressure difference	max. 290 mbar
Power	4 kW
Frequency	50 Hz
Hose diameter	60 mm
Hose length (Std.)	5 m
Total mass	42 kg
Dimensions (WxHxD)	382 x 384 x 432 mm
Sound pressure level, max.	max. 69 dB(A)
Power supply (standard)	by amplifier rack
Max. current consumption at 400 V	7.2 A

Options:

Silencer TB 0310-SI (Noise reduction up to 6 dB(A))

Dimensions (LxD): 308 x 82 mm

Mass: 0.58 kg

Acoustic enclosure TB 0310-AE (Noise reduction 15 - 23 dB(A))

Dimensions (WxHxD): 650 x 760 x 860 mm

Mass: 55 kg

Hose length according to customers request (up to 10 m)



Cooling blower TB 0310



Silencer TB 0310-SI (optional)



Acoustic enclosure TB 0310-AE (optional)