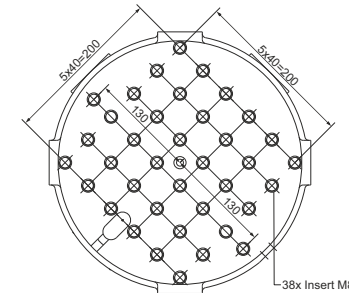
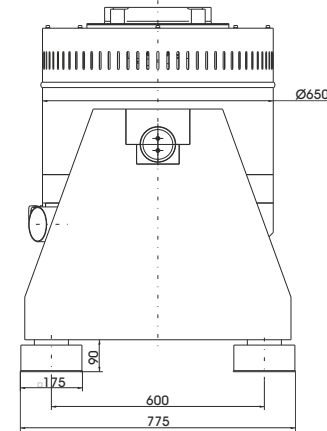
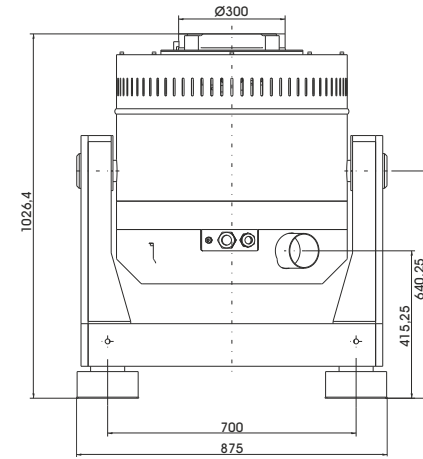


TECHNICAL PARAMETERS Vibration exciter S 57315/LSS-300

Rated peak force Sine _{pk} /Random _{RMS} ¹ /Shock _{pk} ²	15000/11000/37500 N
Frequency range	1 - 2000 Hz
Main resonance frequency	> 1700 Hz
Max. displacement Peak-Peak ³	100 mm
Max. velocity Sine/Random/Shock	2.0/2.0/4.5 m/s
Max. acceleration Sine/Random/Shock	60/50/210 g
Suspension stiffness	electronically adjustable
Effective moving mass (±5%)	17.0 kg
Max. payload	80 kg
Total mass	1200 kg
Magn. stray field ⁴	< 6 mT
Armature diameter	300 mm
Interlocks	Field coil temperature, displacement, cooling air, overcurrent



Armature 300 (Standard)

1) Random force according to ISO 5344:2004
 2) Theoretical maximum shock value. Depends on payload, amplifier, shock and shock width
 3) only with foundation mounting
 4) measured at 150 mm above armature
 For long-term tests, the load must be reduced to 80 %. Continuous operation at maximum load can cause damage.

SCOPE OF DELIVERY, OPTIONS AND FEATURES OF THE SYSTEM

<p>Scope of delivery: Vibration exciter 15 kN Trunnion mount Power amplifier 37.5 kVA Cooling blower Connection cables (each 5 m) Power cables (5 m) for amplifier (CEE 63 connector) Blower hose ø140 mm (5 m)</p>	<p>Options: Different thread inserts in the armature at customer request Wheels&Rails (incl. 3m rails) Squeak&Rattle (Silent operation without blower) Thermobarrier Chamber leadthrough Climatic chamber support kit Remote control (Software) Silencer for cooling blower (Noise reduction 3 - 6 dB(A)) Acoustic enclosure for cooling blower (Noise reduction 5 - 23 dB(A)) Cable extension Factory acceptance test</p>	<p>Options: TIRA EMS Energy Management System Operation with temperature-controlled cooling blower (and optional with variable field strength) ASM-Mode (Auto Shutdown Manager)</p> <p>Features: Vibration isolation < 6 Hz Coarse filter unit Fully automatic electronic load compensation Automatic centering of the armature Degauss kit to reduce stray magnetic field Made in Germany Servicehotline</p>
--	--	---

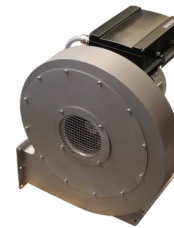
TECHNICAL PARAMETERS Amplifier A 3 01 11 063 T

Output power _{RMS}	37500 VA
Frequency range	DC - 5 kHz
Voltage _{RMS} , max.	212 V
Current _{RMS} , max.	300 A
Signal input voltage _{PK}	±10 V
Total Harmonic Distortion (at 70A _{RMS} , 200 Hz)	< 0.2 %
Signal to noise ratio	> 80 dB
Field voltage	140 V
Field current	8 A
Total mass	520 kg
Dimensions (WxHxD)	600 x 2200 x 800 mm
Power supply (Standard)	3~ / N / PE 400 V±5% 50 Hz, CEE 63
Recommended fuse protection (Standard)	63 A slow
Max. power consumption at 400 V (incl. blower)	31 kVA
Interlocks:	Overload, Temperature, Displacement, Cooling air, Phase monitoring, Emergency stop
Features:	
Field supply integrated	
Mains switch and integrated line filter	
Field voltage/Field current variable according to customer spec.	
4 Sigma peak current	
Electronic zero-point-regulation (TMC)	
Color Touch Screen	



TECHNICAL PARAMETERS Cooling blower TB 120 FUK

Max. volume flow rate	1500 m³/h
Total pressure difference	10.2 kPa
Motor output	5.5 kW
Max. frequency	100 Hz
Hose diameter	140 mm
Hose length (Std.)	5 m
Total mass	61 kg
Dimensions (WxHxD)	487 x 637 x 487 mm
Max. sound pressure level	102 dB(A)
Power supply (standard)	by amplifier rack
Max. current consumption at 400 V	13 A
Options:	
Silencer TB 120-SI (Noise reduction 3 - 6 dB(A))	
Dimensions (LxD): 1100 x 160 mm	
Mass: 1.2 kg	
Acoustic enclosure TB 120-AE (Noise reduction 5 - 23 dB(A))	
Dimensions (WxHxD): 1250 x 1393 x 1470 mm	
Mass: 103 kg	
Hose length according to customers request (up to 10 m)	



Cooling blower TB 120 FUK



Silencer TB 120-SI (optional)



Acoustic enclosure TB 120-AE (optional)